

In order to prevent any interruption of service customers must change their email and/or dialup dialer settings immediately.

WINS will be implementing some changes in how dialup customers log into the Internet and how dialup/DSL customers send/receive email (@winco.net email addresses only). Instructions in how to change your settings have been provided below. If you need assistance in changing the settings please call our technical support at 877/221-3875. They are available 7 days a week 24 hours a day.

Email Setup Instructions:

Eudora 6.0

Step 1:

Open Eudora, and go to Tools -> Options as in Fig 3.

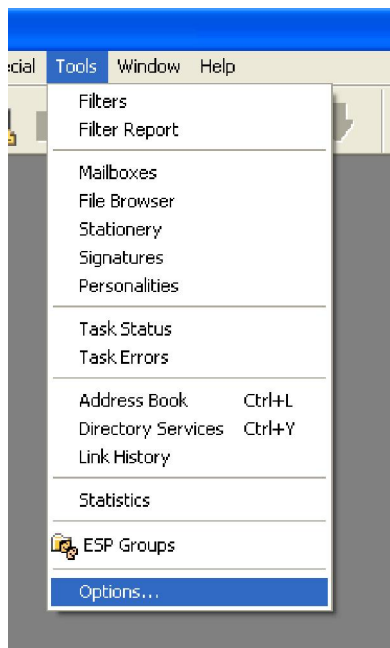


Fig 3.

Step 2:

Select the “Getting Started” icon on the left and confirm the following areas.

- A. Mail Server (Incoming): - mail.winco.net
- B. User Name: your entire email address (i.e. – joe@winco.net)
- C. SMTP Server: smtp.winco.net

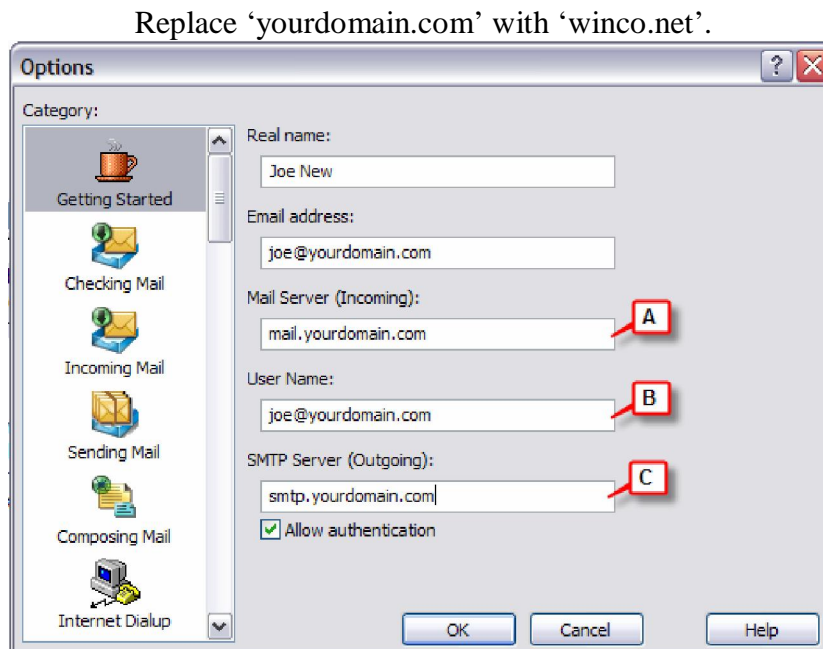


Fig 4

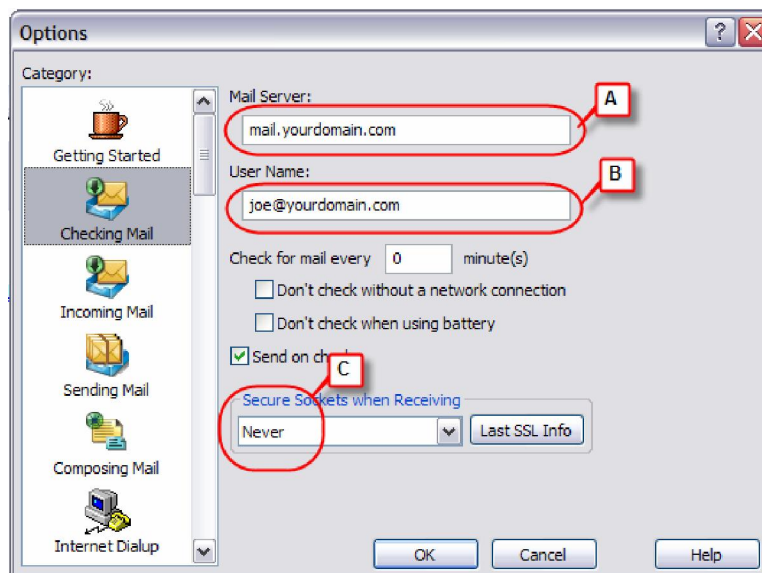
The “User Name option Fig 4-B should be set to your entire email address.

Step 3:

Select the “Checking Mail” icon on the left and confirm the following 3 areas.

- A. Mail Server – Confirm and change if needed. This should display the mail settings from the previous screen – mail.winco.net.
- B. User Name – Confirm and change if needed. This should be your entire email address.
- C. Secure Sockets when Receiving – Confirm and change if needed. This option should be set to never. If you wish to receive secure email this option can be set at a later time.

Replace ‘yourdomain.com’ with ‘winco.net’.



Step 4:

Select the 'Sending Mail' icon on the left hand side. Check that the SMTP server is set to your outgoing mail server (smtp.winco.net). See figure 4 for the following options.

- A. Email Address – confirm and change if needed. This should display the users email address from the previous screen.
- B. SMTP Server – Confirm and change if needed. Edit this entry to reflect your domain entry.
- C. Secure Sockets when Receiving – Confirm and change if needed. This option should be set to never. If you wish to receive secure email this option can be set at a later time.



Fig 4.

Note:

In order for SMTP authentication to work with Eudora, it is important that the user credentials that are entered for the POP server are set to the email address for the username. i.e. joe@winco.net instead of just joe.