

In order to prevent any interruption of service customers must change their email and/or dialup dialer settings immediately.

WINS will be implementing some changes in how dialup customers log into the Internet and how dialup/DSL customers send/receive email (@winco.net email addresses only). Instructions in how to change your settings have been provided below. If you need assistance in changing the settings please call our technical support at 877/221-3875. They are available 7 days a week 24 hours a day.

Email Setup Instructions:

Outlook XP

Step 1:

Open Outlook, then go to Tools -> 'email Accounts' as shown in Fig 5.

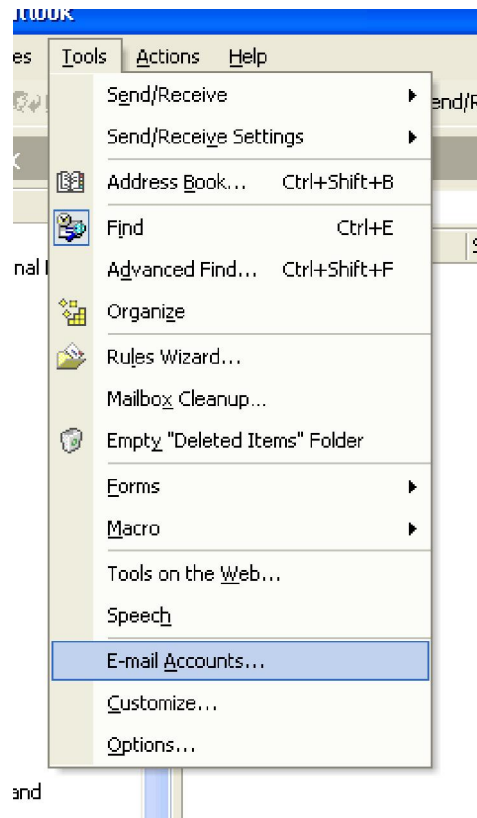


Fig 5.

Step 2:

When the email Accounts dialog box appears, select 'View or change existing email accounts,' then hit 'Next' as shown in Fig 6.

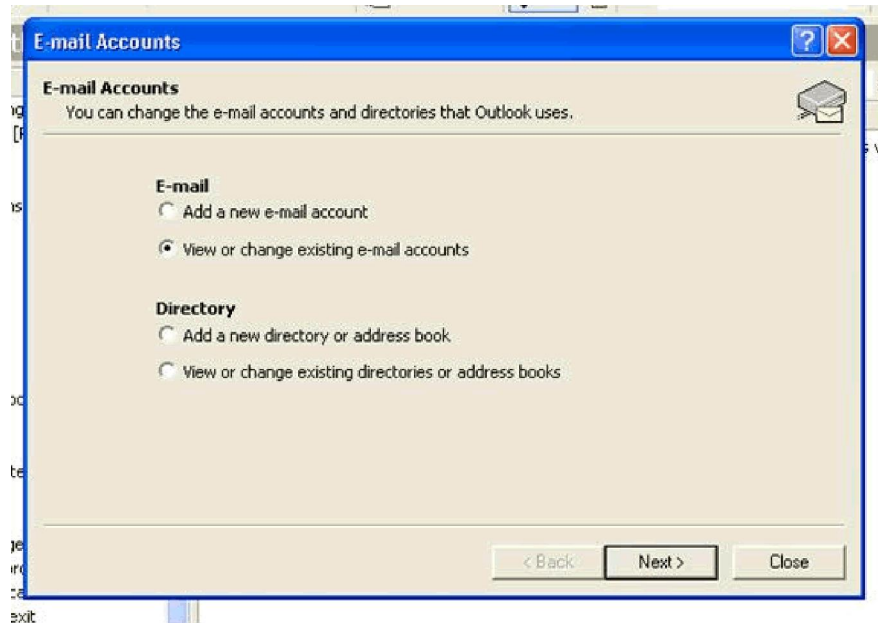


Fig 6.

Step 3:

When the dialog box with your email account(s) list comes up, select the account in question, and then click 'Change' as shown below in Fig 7.

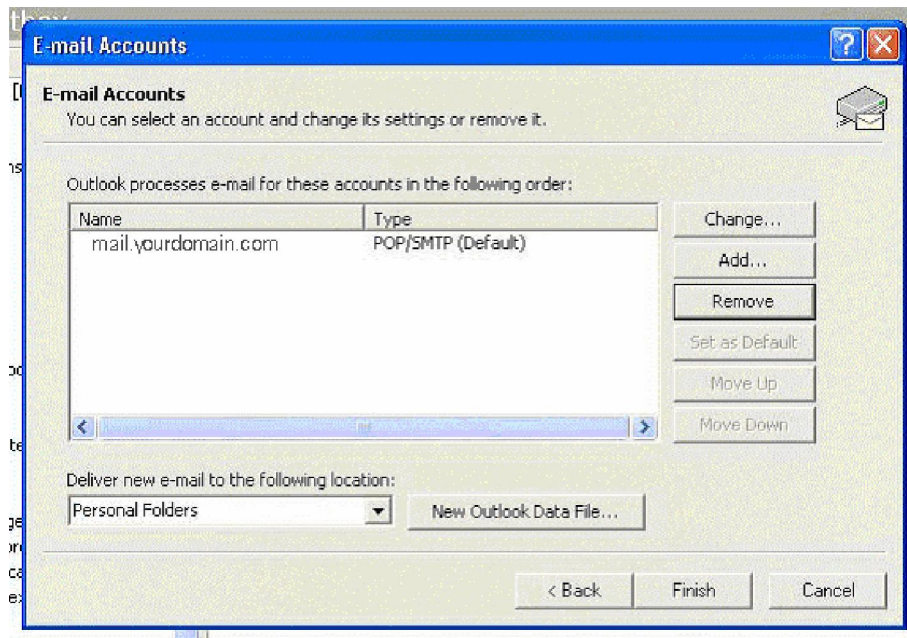


Fig 7.

Step 4:

When the screen for your email account comes up, ensure that the “Server Information” is correct. Fig 8-B

Incoming mail server (POP3): mail.winco.net
Outgoing Mail Server (SMTP): smtp.winco.net

In the “Logon Information” area change the “User Name” to use your entire email address not just the user name Fig8-A

Once the detail above is confirmed then select the button in the lower right hand corner labeled ‘More Settings’ as shown in Fig 8.

Replace ‘yourdomain.com’ with ‘winco.net’.

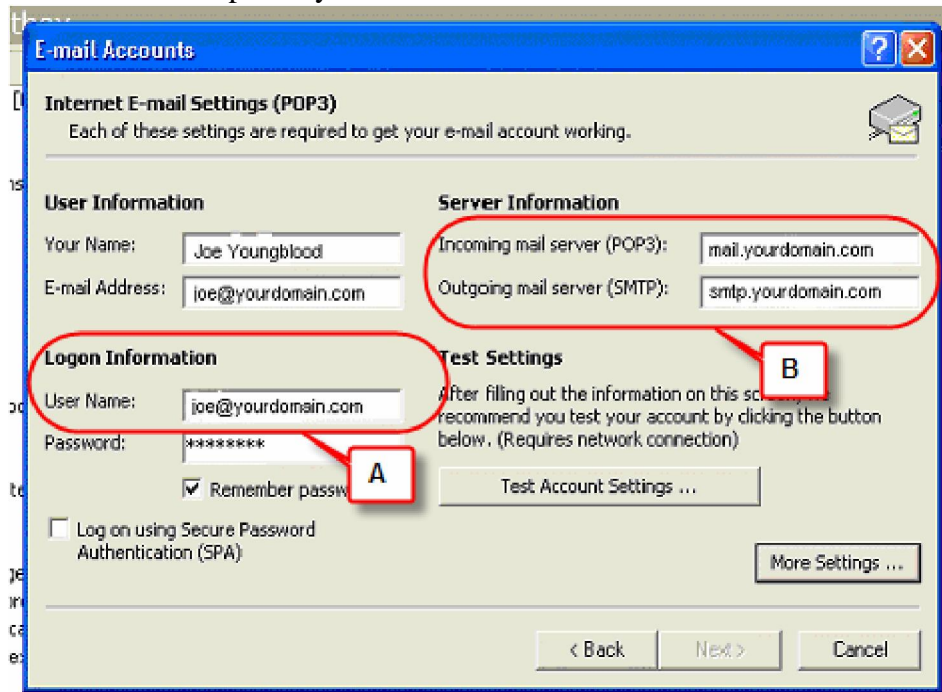


Fig 8.

Step 5:

Select the tab labeled 'Outgoing Server' when the dialog box pictured in Fig 9. appears, select the box labeled 'My outgoing server (SMTP) requires authentication.' Fig 9-A.

Next confirm that the "Use same settings as my incoming mail server" is selected like Fig 9-B.

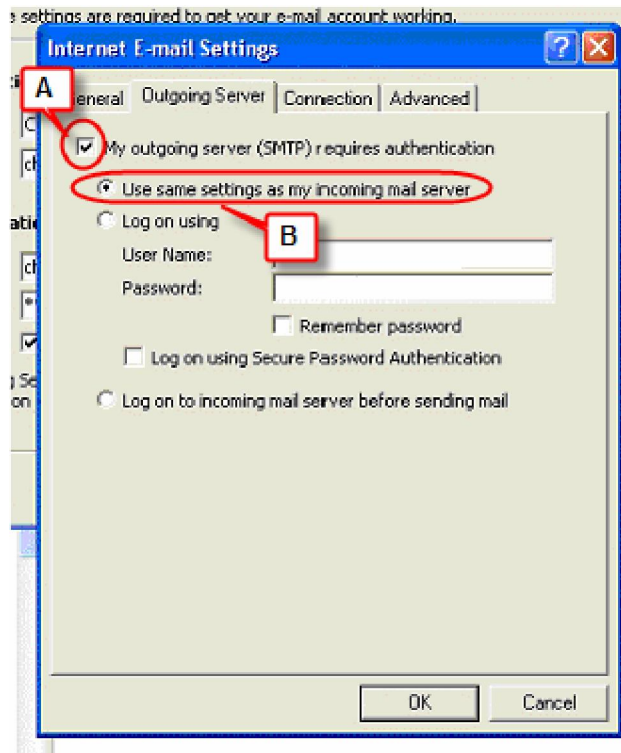


Fig 9.

By the user selecting the above options the client will use the same information to login as to what was entered in the previous screen see figure 8.